

Titus County Development Projects – Status Update – as of 8 September 2014

Agenda Item 9 - Adult Probation

- Ceiling underway, Floor tile start this week
- Doors scheduled in on the 10th, stain and install with trim
- Millwork started – offsite construction of built in desk and cabinets for reception office
- End of September finish

Agenda Item 9 Ratliff Building

- **Phase I – Elections Administration packages – out for bids this week – construction start now set for mid/late November: 5-6 weeks of construction**
 - 8 separate bid packages – totaling an estimated \$56K
- **Phase 2 – Tax and Vehicle Registration Offices – out for bids this week – Construction start now estimated mid/late January 2015: 8-10 weeks of construction**
 - 8 separate construction packages
 - total estimated at \$130k

Agenda Item 10 - Engineering Fee – Adult Probation

- Additional \$850 needed for Total Engineering Services for engineering fee mandated by state law for mechanical and electrical work over \$8000 (result of vandalism)

Agenda Item 11 - Annex Corner Storefront

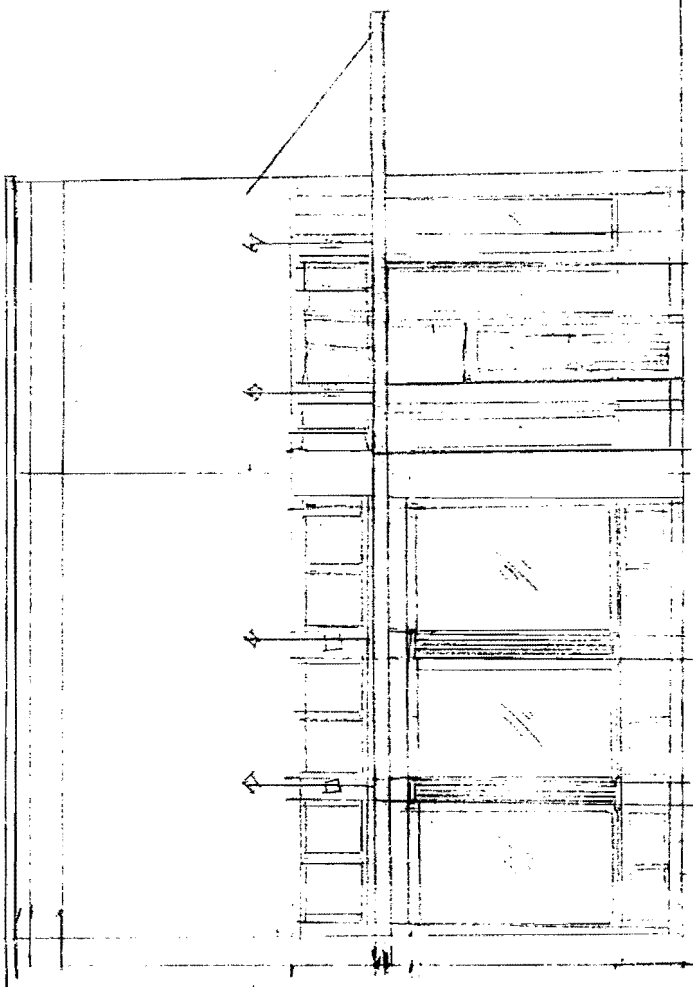
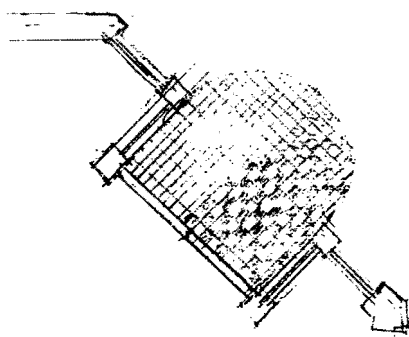
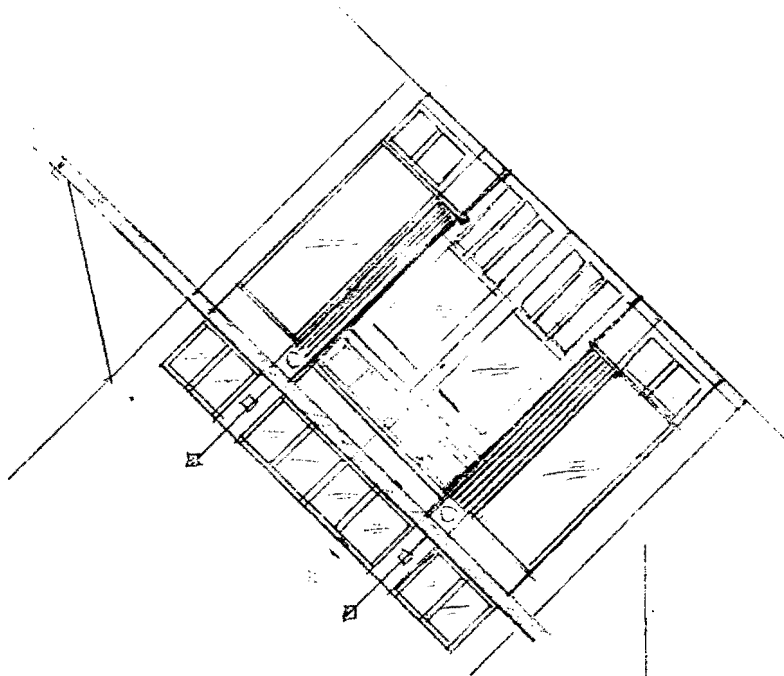
- Concept approved by Main Street, final design details needed
- Estimated at \$32k for design, brickwork, energy efficient windows, exterior lighting, doors, awning construction and CM services
- See attached photo and sketches
- Need approval to finish design and put out for bids for construction

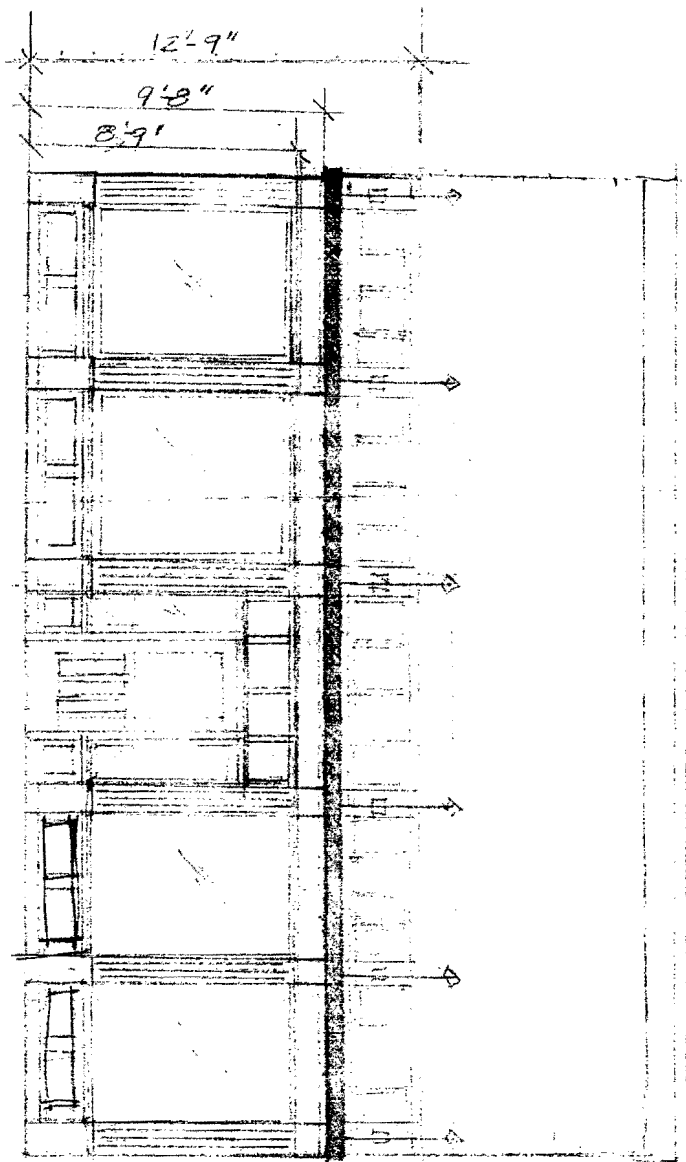
Agenda Item 12 – County Computer Room Renovations

- Expansion into existing storage space to provide work areas for computer maintenance and better management of network systems
- Estimated at \$11k – Need court approval to go forward for best value bidder
- Detail scope and drawing attached

Agenda Item 13 – Weigh Stations Repair

- To solve rat infestation problem and clean up at two weigh stations on I-30 – detailed scope attached
- Estimated at \$7-8k – Two proposals offered: \$5500 from Stansell Construction and \$11,200 from DeAngelo Development – Recommend the Stansell Construction bid

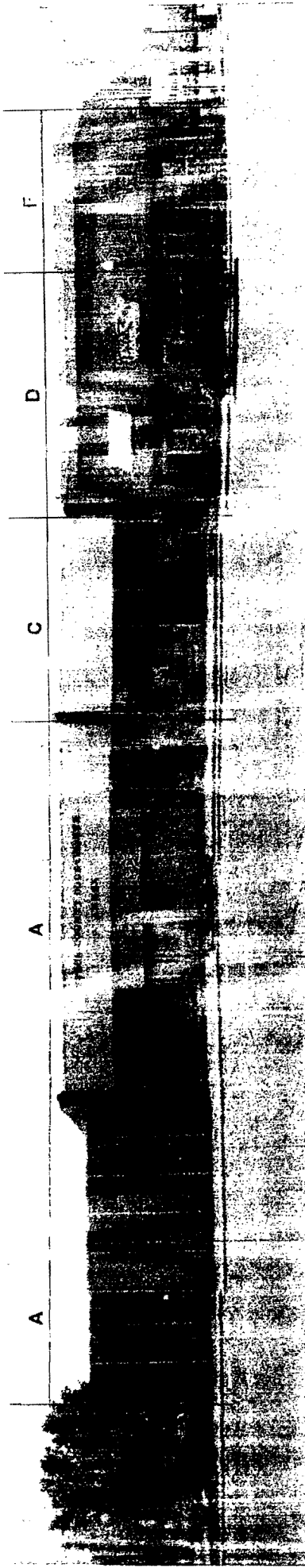




SECTION THROUGH FRONT BALCONY



SOUTH SIDE OF DOWNTOWN SQUARE - NORTH FAÇADE OF ANNEX AND NEW SPACE



WEST FAÇADE OF NEW SPACE

